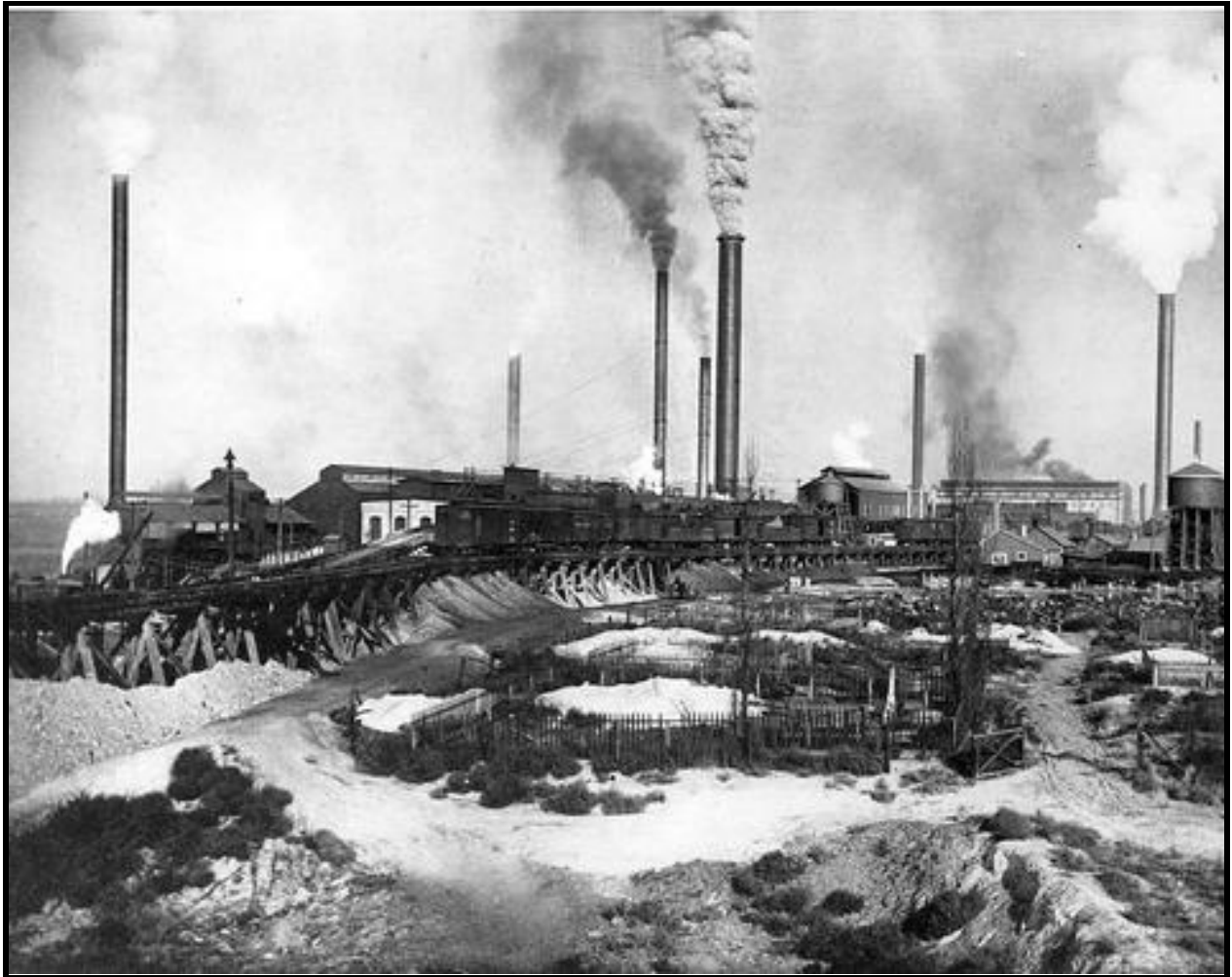


Murray Smelter



Introduction:

The Murray Smelter is the former location of a large lead smelter in Murray City. The smelter operated for about 77 years, from 1872 until 1949. The lead smelting and arsenic refining operations affected the soil, groundwater, surface water and sediment at the 142-acre site and the surrounding area.

EPA proposed including the site on the National Priority list (NPL) in January 1994. In 1995 EPA began working with Murray Smelter and the Utah Department of Environmental Quality (UDEQ) to investigate it under the terms of an Administrative Order on Consent. EPA and Murray City entered into a unique agreement which established a formal role for the city in identifying potential future land uses at the site; participating in the development of cleanup options; and implementing institutional

controls required by EPA's clean-up decision. The site listing on the NPL was never finalized because of these agreements and because cleanup was already underway.

The site was proposed for inclusion on the Superfund National Priorities List (NPL) in 1994. Cleanup activities for the site began in 1998 and were completed in 2001.

Documents:

A Public Health Assessment (PHA) was conducted for the smelter site and surrounding area. The PHA was completed in 1997.

- **Public Health Assessment**
 - The PHA evaluated the potential for long-term health impacts in the community.
 - The Murray Smelter NPL Site poses no apparent public health hazard.

Contaminants

- [Arsenic~Health Statement](#)
- [Arsenic~ ToxFAQ](#)
- [Arsenic~Tox Profile](#)
- [Lead~Health Statement](#)
- [Lead~ ToxFAQ](#)
- [Lead~Tox Profile](#)

Additional Information

- [Utah Lead Poisoning Information](#)
- [Salt Lake County Health Department](#)
- [Environmental Protection Agency - Murray Smelter](#)